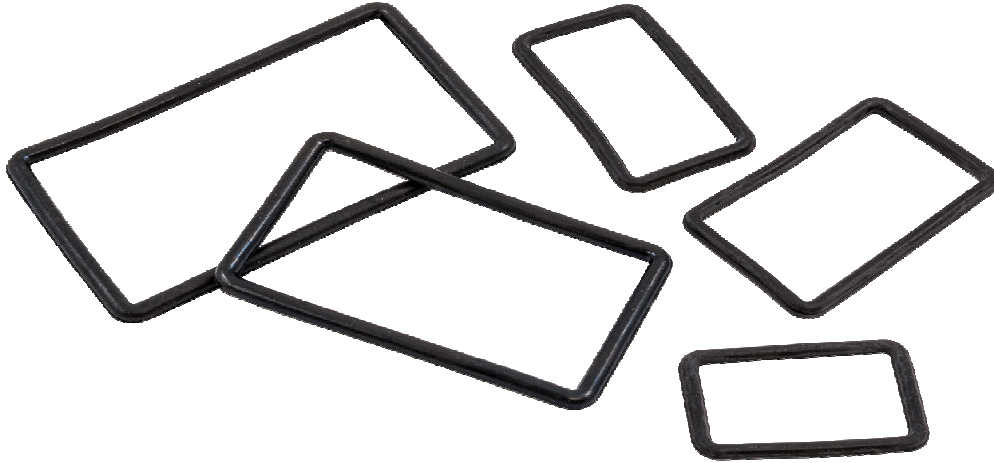


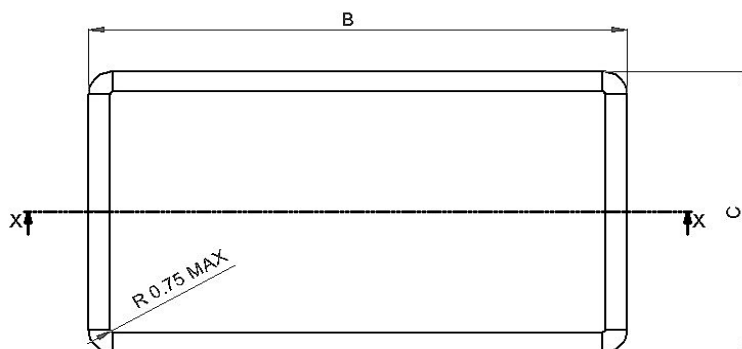
flexiguide

Product Specification

Double CPR Gaskets - rubber gaskets to connect a CPR-G (grooved) flange to a CPR-G (grooved) flange. Also known as Full Height Gaskets.



Part Number	Used with Flanges	Dimensions (mm)			Material	Colour
		ØA	B	C		
RG10C-DH	10C (CPR284G) mated with 10C (CPR284G)	3.53	87.66	49.56	EPDM	Black
RG11C-DH	11C (CPR229G) mated with 11C (CPR229G)	3.53	72.82	43.74	EPDM	Black
RG12C-DH	12C (CPR187G) mated with 12C (CPR187G)	3.53	62.20	36.80	EPDM	Black
RG13C-DH	13C (CPR159G) mated with 13C (CPR159G)	3.53	55.04	34.85	EPDM	Black
RG14C-DH	14C (CPR137G) mated with 14C (CPR137G)	2.62	47.40	28.35	EPDM	Black
RG15C-DH	15C (CPR112G) mated with 15C (CPR112G)	2.62	41.05	25.17	EPDM	Black
RG16C-DH	16C (CPR90G) mated with 16C (CPR90G)	2.62	34.75	22.05	EPDM	Black



SECTION X-X

Double Gasket
(Full Height Gasket)

