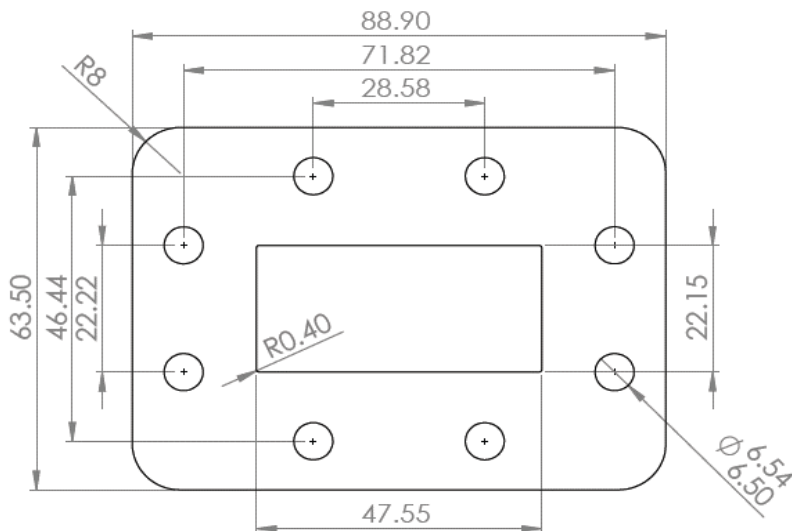
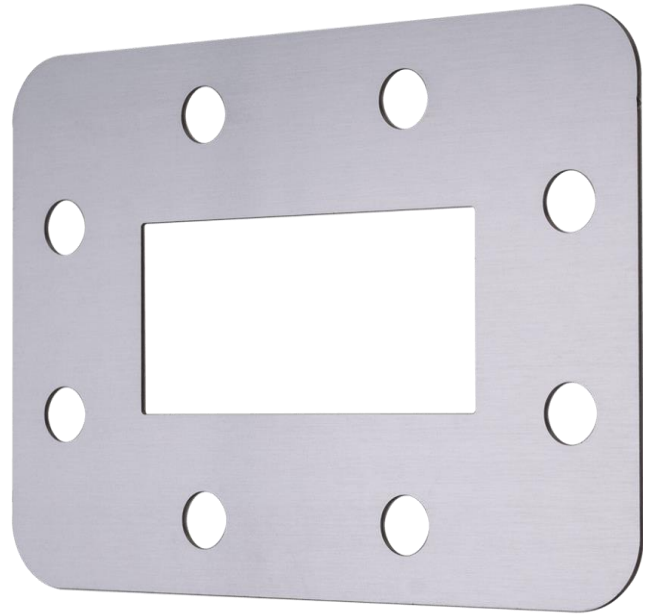


Product Specification

Waveguide Shims - with Flat Flange Faces for use in rectangular waveguide systems. Ideal for use sandwiched between two grooved flanges.



Part Number: WS12D/L

Description

Product Type:	Plain Shim
Waveguide Size:	WG12 / WR187 / R48
Flange Face:	12D (CPR187F) / 12L (UDR48)
Material:	Stainless Steel
Thickness:	0.6 mm
Accessories:	None