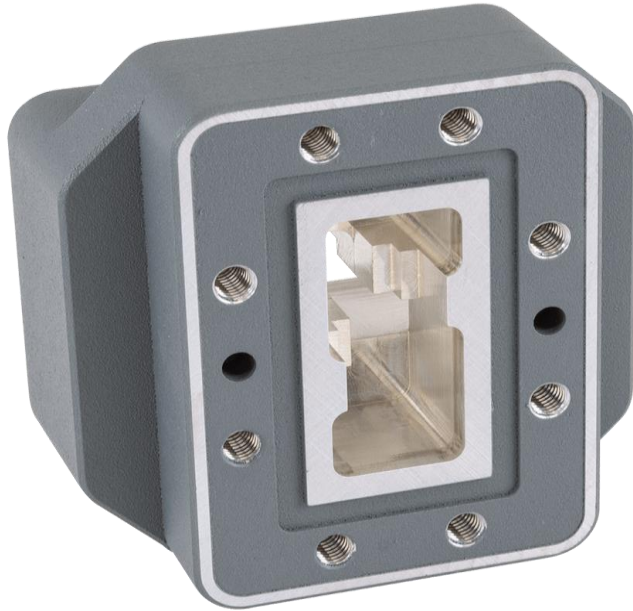
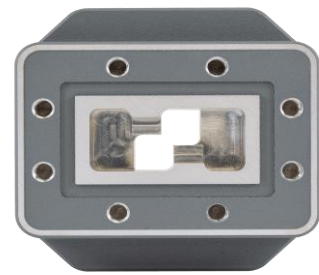


flexiguide

Product Specification



Front View



Rear View



Product in use

Part Number:

ST14HH-90-P-*

* = see options below

Description / Mechanical Specifications

Product Type:	Waveguide Twist (Super-Twist)
Waveguide Size:	WG14 / WR137 / R70
Flange 1:	14H (PDR70)
Flange 2:	14H (PDR70)
Twist Angle:	90°
Material / Finish:	Aluminium / Passivated
* Paint Finish:	G = Gray (RAL 7012), B = Black, W = White
Accessories:	None

Dimensions

Length:	38 mm	Hole Size:	M5 Thread
---------	-------	------------	-----------

Electrical Specifications

Frequency Range:	5.85 - 8.20 GHz
Insertion Loss:	0.1 dB
Return Loss:	29.4 dB

Environmental Performance

Temperature Range:	-70 to +150°C
ETSI Class:	ETSI EN 300-019-2-4 Class 4.1
I.P. Rating:	IP65 (Weatherproof)